

Västerås Vibes

Mälarpport is an "urban island", a fragment left by the industrial history of Västerås. A crossing point, accessible but isolated and foreign to the city. In its entirety, a waiting land which is being involved in a long and complex process of transformation to become a beating heart of the urban area.

Nowadays, an era of transformations and uncertainty, it is crucial to identify new values as foundation for the urban development. Avoiding the production of additional slugs requires a change of perspective, the transition from the masterplan to the process. The "traditional" masterplan has to be backed up by a project of the transformation process.

Promptness, testability, and reversibility of the urban actions are essential in the long-term transformation.

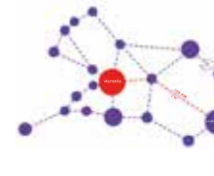
Thanks to their intrinsic features, temporary architectures and uses are the principal tools to start and support complex transformation processes. The use of material resources is reduced. These are low-cost and easily recycled, avoiding wastes.

Instead, the amount of immaterial resources involved – like knowledge, networking, participation – are at the maximum, leading to tangible positive results.

Mälarpport Vibes is first and foremost a project of process, and it consists of three main elements:

- Urban actions easily and quickly achievable through temporary solutions.
- A temporal implementation strategy.
- A set of tools for the activation of the area and a sharp tactic of engagement.

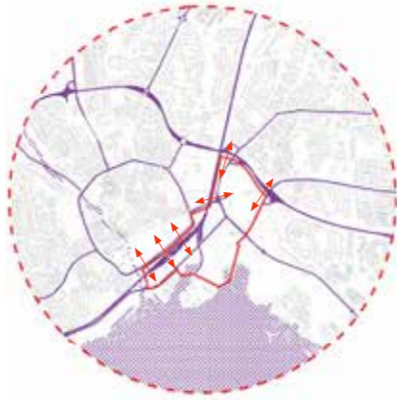
City without limits



The Stockholm-Mälaren region, within which Västerås is an important node, is very impactful for Sweden's development and international competitiveness.

By 2030 Västerås is expected to become an integral part of the capital Stockholm's labour market region.

Almost half of Sweden's population live within a radius of 150 km from Västerås and the stretch Västerås-Stockholm, that passes through three counties, makes up a labour market for 1,3 million employed people.



The strategic site is strongly divided from the city centre by the railway and the highway. However, these two infrastructures constitute the interfaces between Mälarpport and the larger metropolitan area as well.

- Actions:**
- Reconnect Mälarpport to the urban centre overcoming the infrastructural barriers.
 - Activate the access points to the area from the larger urban and regional area.

Energy capital

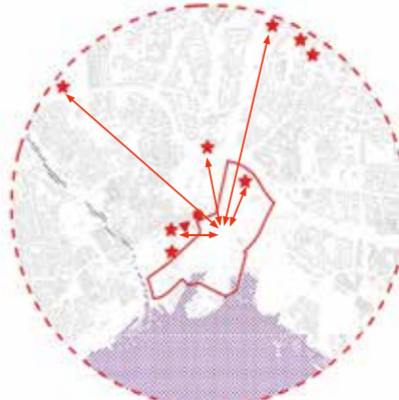
Västerås is known as the energy capital of Sweden because of his industrial history and because around 10% of jobs within the energy sector in Sweden are in Västerås.

In Västerås, there is a world-leading center for energy competence.

Manufacture is an essential part of the culture, the economic and social life of the city for Västerås.

The city is a prominent centre for technical innovations and Mälardalen University, will contribute to further positioning Västerås as a knowledge city.

It is paradoxical that, Mälarpport suffers of a perceived unsafety due to the reduced amount of illumination in the dismissed and vacant areas.



Mälarpport should identify in his proud industrial historic ad actual status the core of its new identity.

- Actions:**
- Involve the local stakeholders – production and education actors – in the transformation process.
 - Locate the city economic and social fabric elements of identity and attractiveness.
 - Illuminate Mälarpport, increasing the safety feeling.

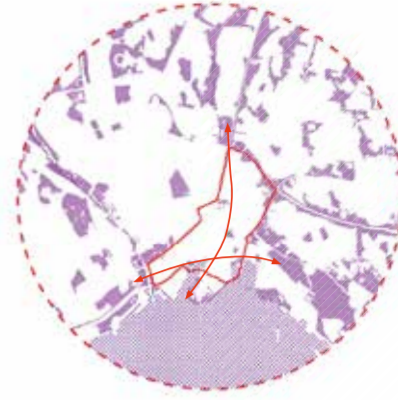
Green city by the lake

Lake Mälaren is a unique asset. Västerås has the largest lakeside recreational port in Scandinavia on Lake Mälaren.

The hinterland of Västerås is characterised by a wide presence of vegetation, constituted mainly by nine forests. These forests can be visited by humans but they are also a refuge for many animals, plants, and fungi.

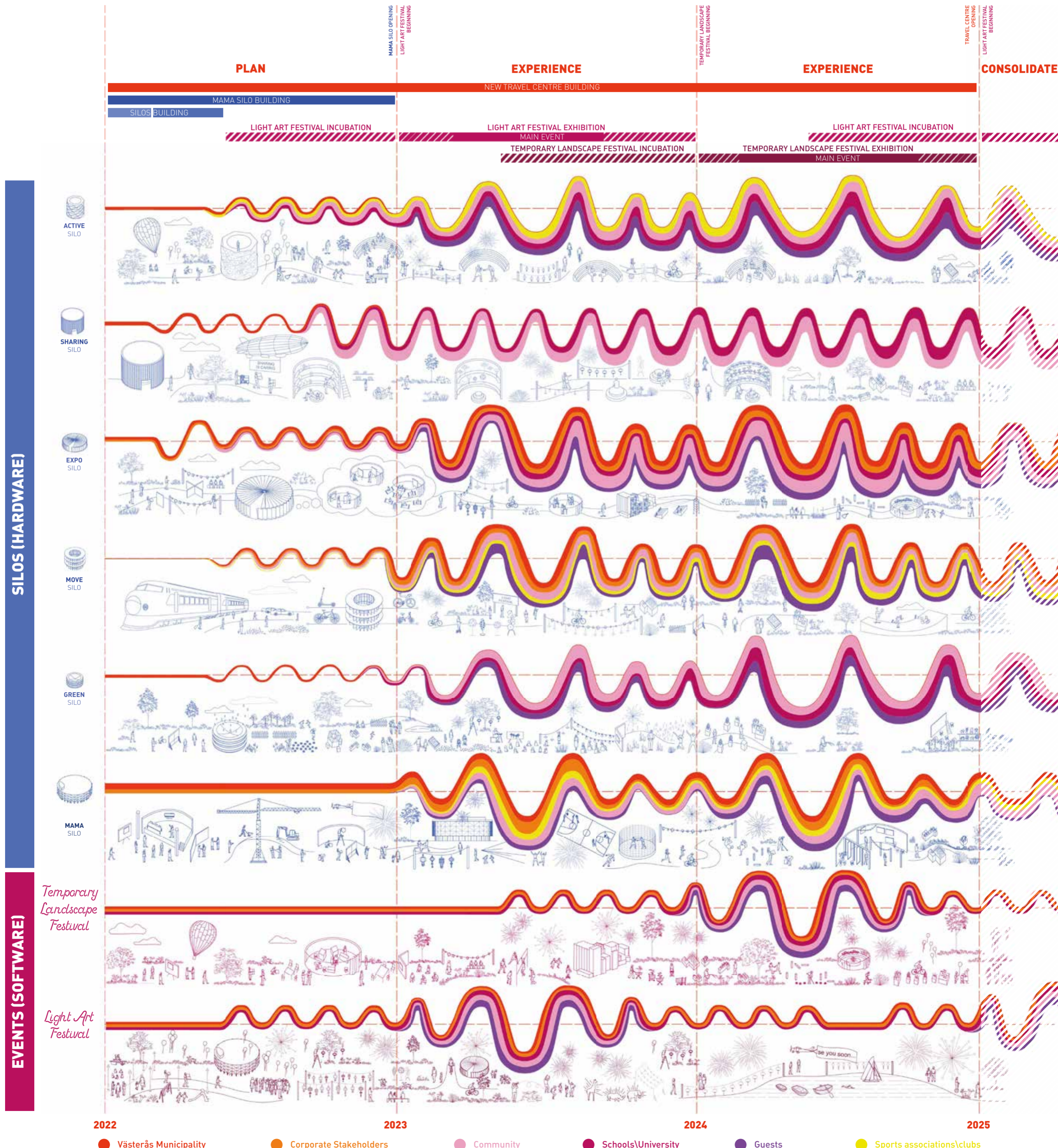
Green spaces allow a simultaneous double use both as "ecological infrastructure" and space for activities.

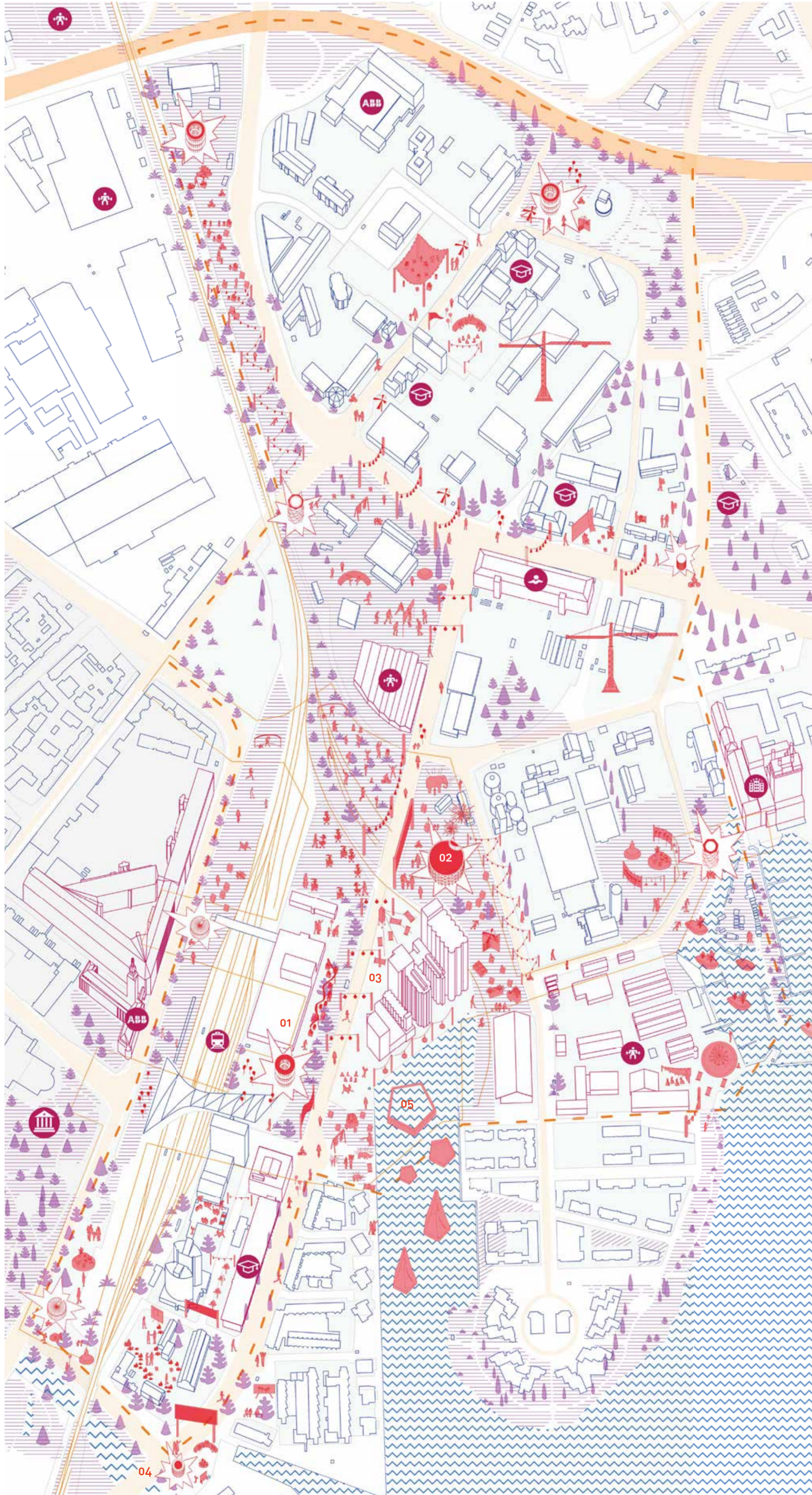
Mälarpport includes various sport and leisure facilities inside the site or just nearby. Specifically, the Westinghouse Arena, which is in a central position, the docks area on the lakeshore and the "nautical district".



Vice versa, the connective systems consisting of parks and green spaces stop in Mälarpport.

- Actions:**
- Involve the local stakeholders – sport facilities and associations – in the transformation process.
 - Locate the city economic and social fabric elements of identity and attractiveness.
 - Reconnect the green network, healing the existing discontinuity.





Light art festival

Västerås is the energy capital of Sweden. During the winter days the hours of daylight are few. Light and electricity are extremely sensitive topics in the wider them of the energy sustainability and the green transition. The Light Art Festival Exhibition will host different light art installations, different types of urban lighting which will allow to keep secure and alive the outdoor spaces in the night hours. Light means vitality and it is an essential element various kind of artistic performances and the most exciting sport events happen during the night. The main event of the Light art festival could be a "light party" hosted in the central area with music and video projections on the existing Silo facades, overlooking the lake. The corporate partners will have the opportunity to showcase the most innovative and experimental methods of energy production from sustainable resources. The community and associations could organise a light installation contest to be held in the different areas in Mälarporten. The education facilities will have the opportunity to didactically explore the light in all its features and its production through scientific and artistic workshops. Light exhibitions and events are traditional in several different cultures of the world and these different events could find space and home into the Light Art Festival, as an act of welcome to the world and to the immigrant population groups. The light rooms and the light installations will allow a community involvement, offering new vibrant locations for minor and collateral events.

Temporary landscape festival

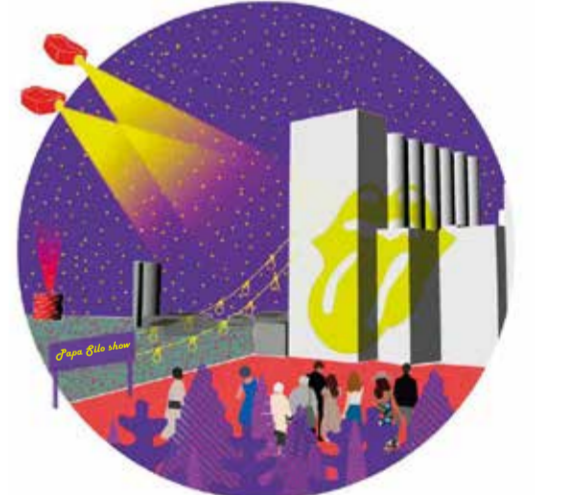
Västerås is a green city, surrounded by forests and facing a lake, but the only greenery in Mälarporten are the pioneer plants. The identification of the urban axes which could reconnect the existing ecological networks suggest the direction to plan the development of a working green infrastructure. The temporary nature of the green is an opportunity to test experimental solutions and find different alternatives which could suggest the design of the green infrastructure of the future. Care and design of the private green spaces are behaviours which already existing and rooted in Västerås. The Temporary landscape festival is the perfect occasion to connect skills, knowledge, tools, time, and passion, transforming an individual practice in a collective and participative one. The available areas will be divided and assigned to associations, group of users, or they could also be assigned to invited artists and landscape designer. Each area could have a specific theme depending on size and features of the area itself. Contest and awards could be organised linked to the different themes: best aquatic landscape, best productive garden, best playground, and so on. The corporate partners will have the opportunity to showcase their concern for sustainability topics through the advertising of their environmental compensation practices. Green means health and outdoor life and activity - a perfect occasion for the organisation of professional sport events - field of dreams - or amateur ones with the involvement of the facilities and associations already active in the area. Collateral and minor events could be marathons and cycling races in the green areas and talks about best international practices of urban gardening. The main event of the Temporary landscape festival could be a great sustainable concert - "Mälarporten We Love Green Festival" - in the temporary park set up around the Mama Silo, like some of the best and most famous music festival, e.g. Woodstock. The education facilities could benefit of a didactical experience studying topic as biology, sustainability, nutrition or experiencing green care activities.



01 - Alternative mobility at the MOVE silo



02 - Mega party at the MAMA silo during the Light Art Festival



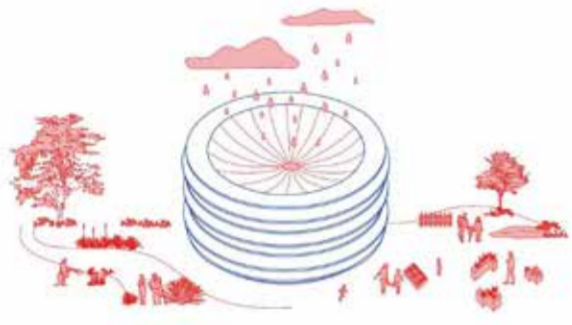
03 - Video Mapping on the existing silo during the Light Art Festival



04 - GREEN silo in activity during the Temporary Landscape Festival

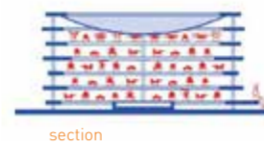


05 - Temporary Landscape by the lake

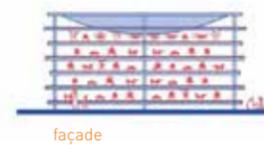


Green Silo

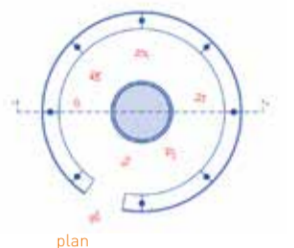
Green Silo is a greenhouse. The outside structure allows to host plants vertically, both inside and outside the pavilion. Its roof collects the water in a central tank. The collected water is then used for the irrigation of the plants. This type of silo is located nearby the parks and provides everything that is needed to take care of the greenery inside and outside of the silo as well as all the linked activities: courses, workshops, etc.



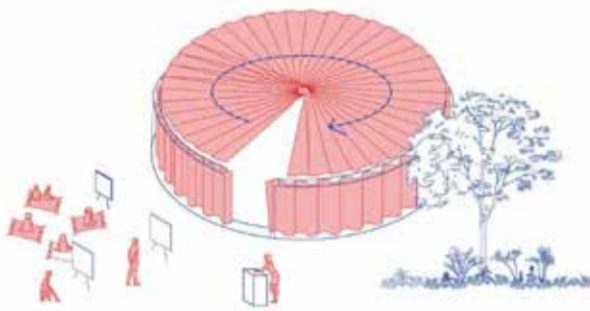
section



façade



plan

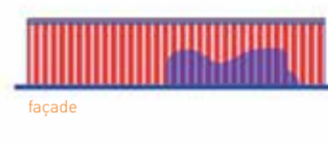


Expo Silo

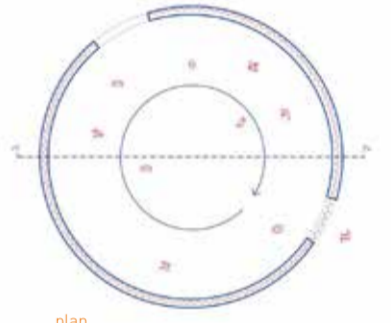
Expo Silo is an urban showcase. A transparent box that displays what it happens inside, being an activity or an exhibition. Thermal and anti-noise curtains both on the façades and on the roof allow the transformation of the space, making it flexible and welcoming. Expo Silo is located beyond the railway, in an area with most visibility from the historic centre. When empty, its surfaces are used as display for video projections and, during the night, it becomes an urban lantern, a bright and coloured referenced point. Like an alert, but at urban scale, the Expo Silo reports that "something of interest is happening" and it provides information about the ongoing events and transformation in the area, hosting activities and initiatives.



section



façade



plan

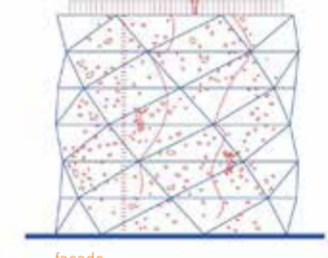


Active Silo

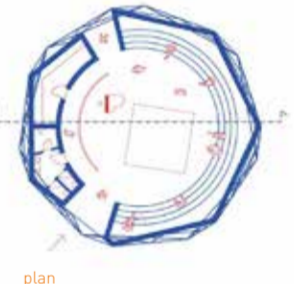
Active Silo is a gym inside and outside. Climbing wall on the outside, inside it hosts an intimate space for sport activities with bleachers around. It is located along parks and existing sport facilities, offering an urban space to give visibility to minor sport events, and providing equipment and support for new uses and functions to the external spaces. Once climbed up, the Active Silo can be experienced as a watchtower to have a wider view of Mälarporten and its ongoing transformation.



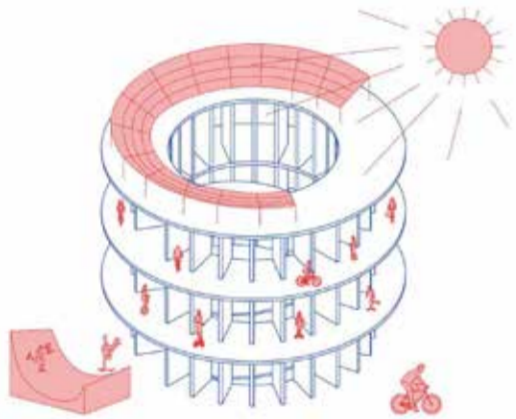
section



façade

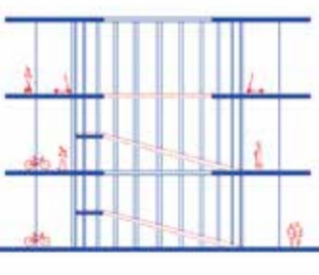


plan

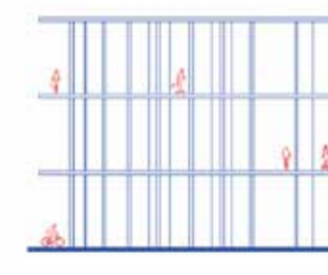


Move Silo

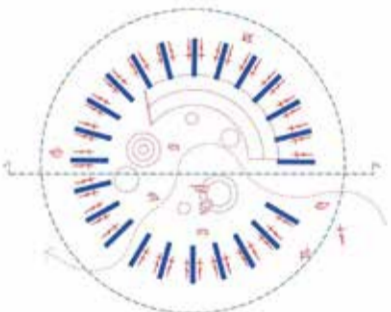
Move Silo is a mobility platform which allow to strategically exchange a transport for long distances – train or car – with a short distance transport – scooter, bikes, Rollerblades, skate, tandem – both electric and traditional. The multi-storey structure, with the iconic ramp to move up and down, fosters a new creative way to move through the city. Move Silo is an urban garage and provides, in addition to the sustainable low speed means of transport, all the tools for their maintenance and recharge. The roof can be equipped with sustainable energy production devices like photovoltaic panels or micro wind turbines allowing the pavilion to be self-sufficient. Moving around is not just functional but becomes an experience of fun and sharing.



section



façade

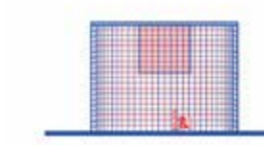


plan

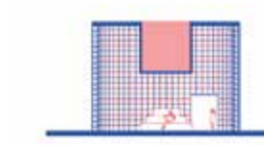


Sharing Silo

Sharing Silo is the branch of the Fritidsbanken of Västerås in Mälarporten. Located nearby the education facilities and the residential areas, it is support device to the community. It allows the sharing of common household goods – lawn mower, drill – or goods for leisure and relax – books or music devices. The Sharing Silo usage can be enhanced through the development of an app with booking and sharing management functionalities. Sharing fosters socialising, meeting, sharing of information, experiences, skills, and knowledge. Inside the Sharing Silo host an intimate space for handicraft workshops and reading groups.



section



façade

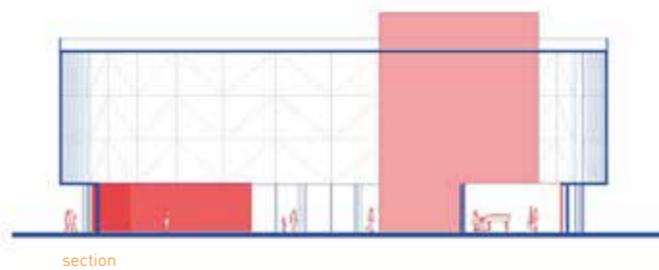


plan

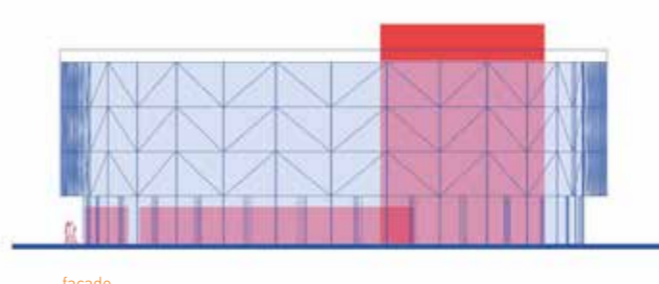


MAMA Silo

MAMA Silo's structure outlines a clear volume without internal fixed walls, and which is openable 360°. Its main function is to provide an infrastructure for the surrounding open space – the bigger and the most central of the site – allowing its use for a huge range of initiatives and activities. MAMA Silo is conceived to be an active and dynamic centre also without big events. Movable thermal and anti-noise curtains allow to flexibly define the internal spaces, enabling simultaneous everyday events of minor scale. The roof is accessible, and it doubles the usable space enabling different configuration of usage, enhancing the pavilion flexibility - e.g. one big event if it is used together with the ground floor space or two separate smaller events if used separately from it. Each internal configuration leaves a big inner core space which can be crossed as in a big covered square where all the urban fluxes in the area are gathered.



section



façade



plan