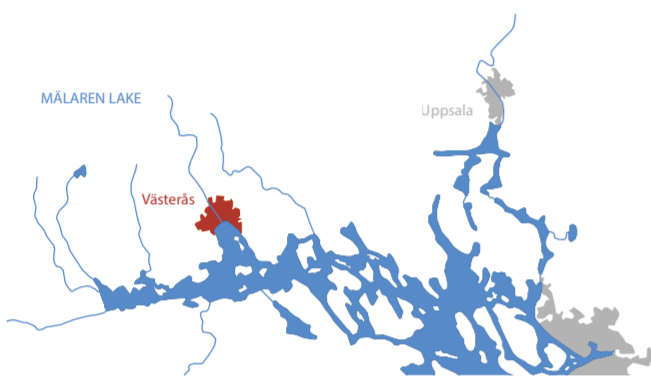
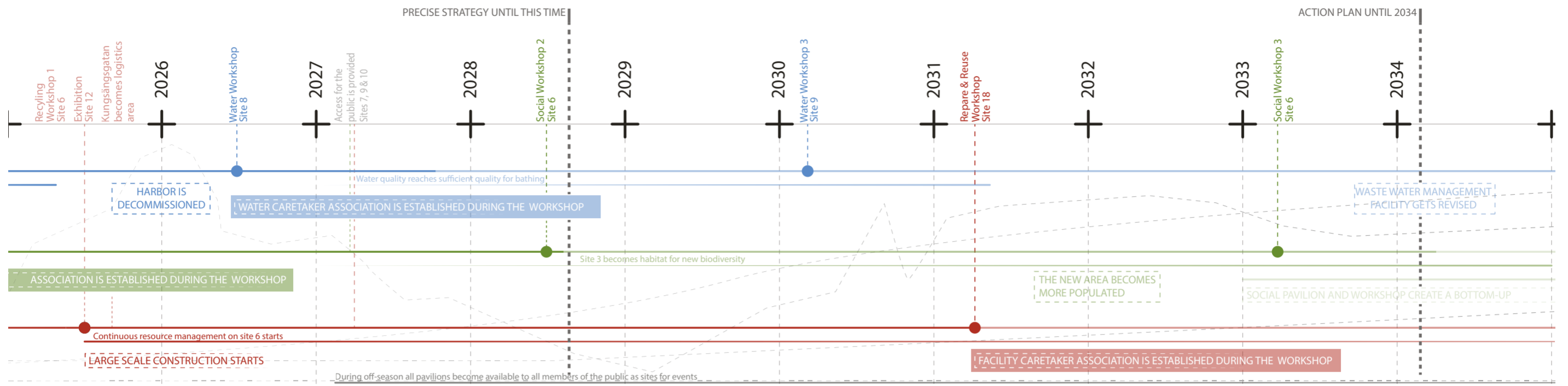


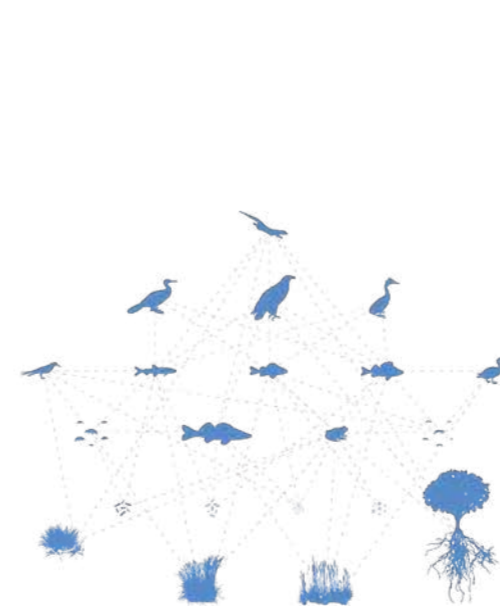
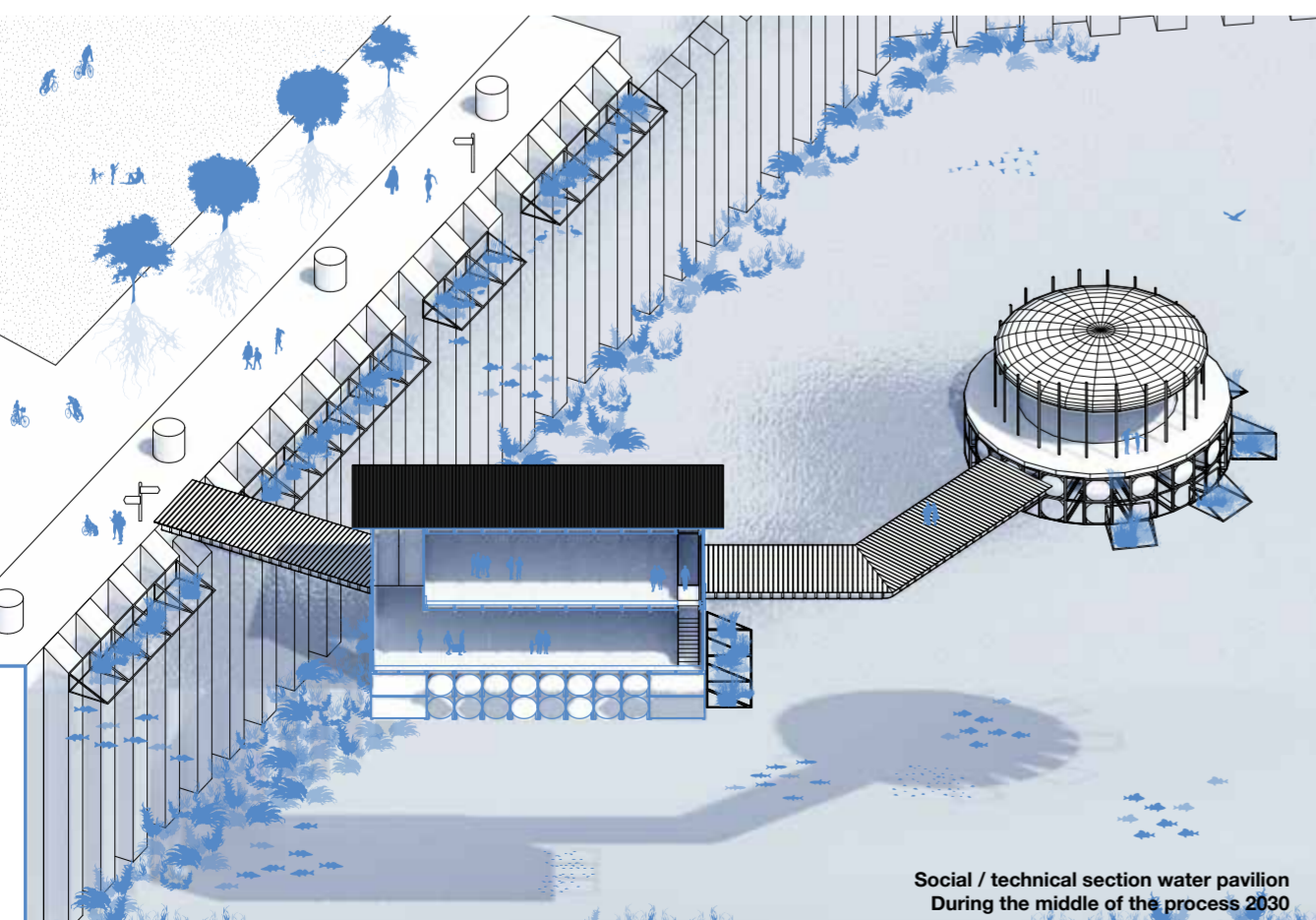
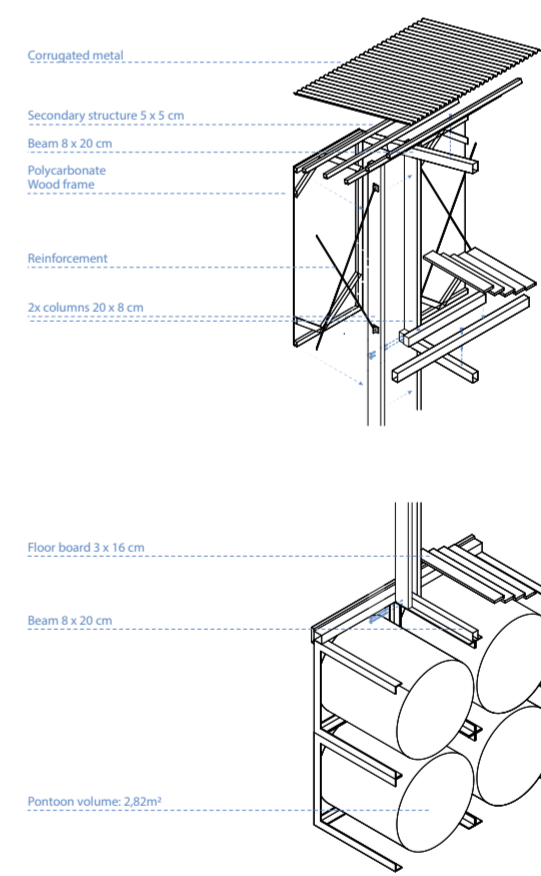
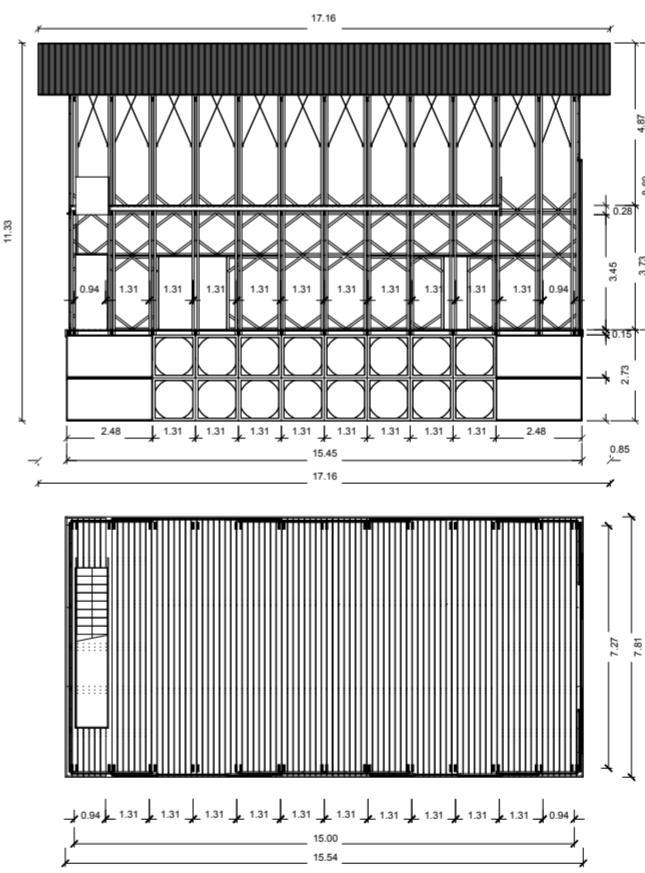
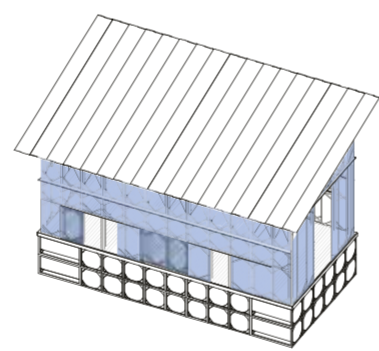
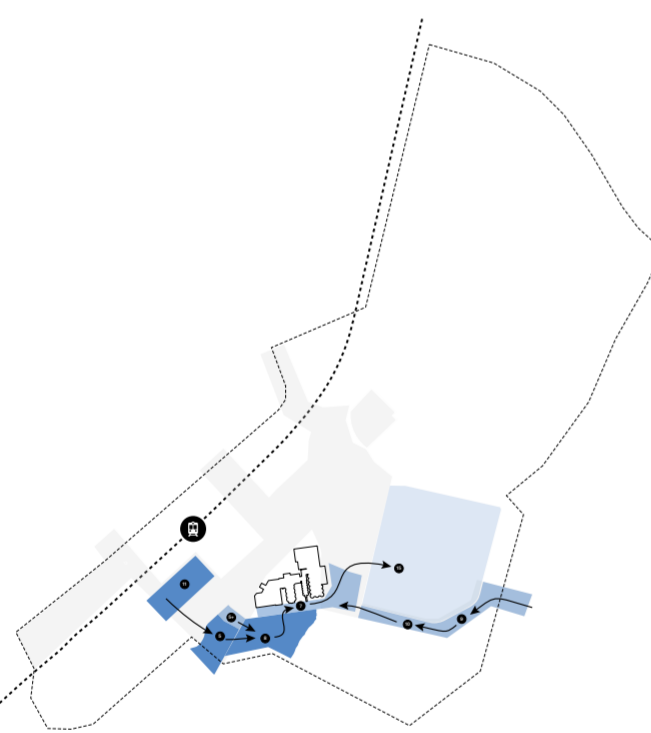
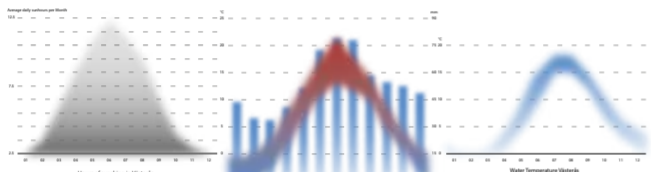
Overview of the available sites



WATER STRATEGY

Our immediate intervention starts in the harbor, at site 8, with the construction of the first floating pavilion. The location of the first pavilion allows ships to enter the bay until 2027.

The pavilions in the Mälärporten bay will allow to host a variety of workshops about the topic of water, for example educational activities such as water cleansing. They will demonstrate the process of vegetalisation as a pedagogical tool for children and young adults. The events enable the inhabitants of Västerås to establish a personal relationship with the aquatic habitat. Finally, they will organize and fit into a global network of people, knowledge and skills.



WATER WORKSHOP!

BRIEF

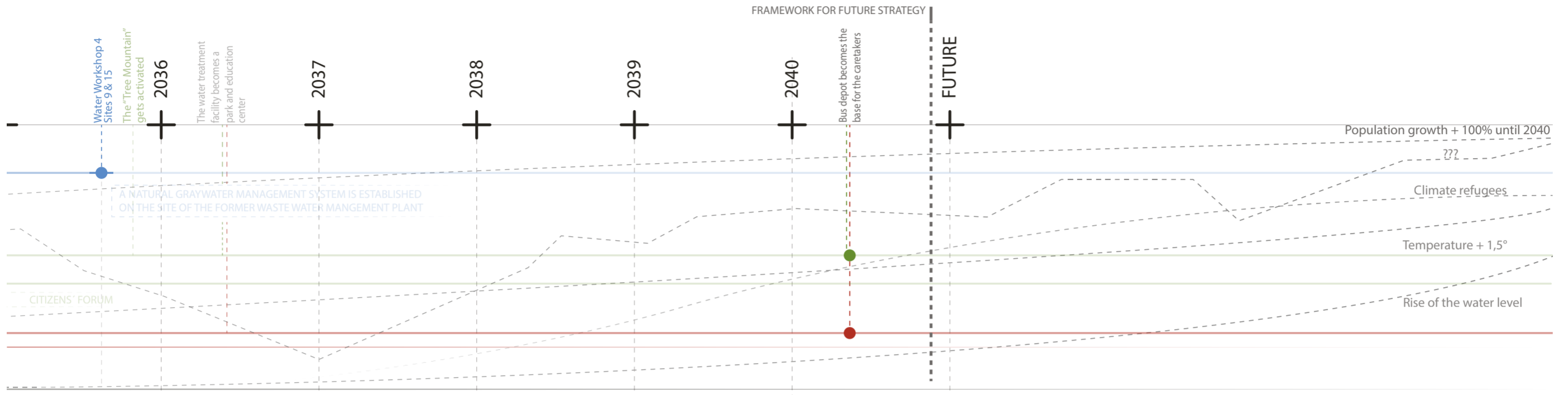
The community of Västerås is invited to investigate the vast potential of the city's water system through the lens of metabolism, allowing participants to experience the interplay of the different infrastructures that are often underappreciated in contemporary urban planning processes. The goal after one week of work is the development of a holistic strategy for Mälärporten and the transformation by creating a system that integrates social, technological, and natural aspects.

FLOW IN VÄSTERÅS

Following a thorough analysis of city's water system and the formulation of a holistic strategy to increase the water quality using natural processes, participants will explore and conduct their own research which will form the basis for the design phase, tangible ideas for the transformation will be collected and further developed in groups. The collected research, design ideas and a map of the social resources will be presented during a public event on the last day of the workshop.

THE RESULT

Following the workshop, a strong network of supporters within the community of Västerås will form a new association and enable real change and transform the water system as caretakers of the water infrastructure. Their knowledge will grow through cohesion within the group and future workshops with similar, relevant topics.



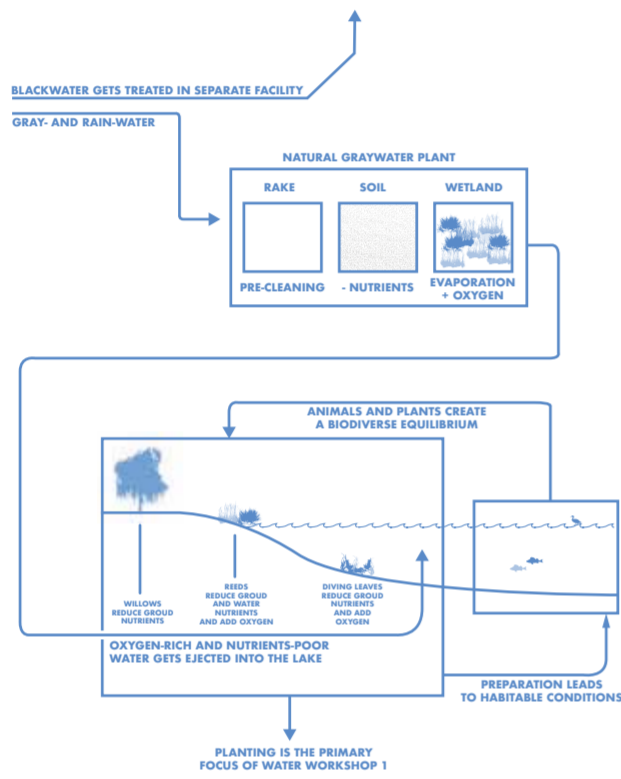
GREEN STRATEGY

First, this strategy will be experimented on the site 6 and 3.

Indeed, the will is to connect the existing trees, that we will call the « Mountain » to link, spread and intensify the mountain forest. It will become a biodiversity reservoir; a new green habitat and a new park for Västerås. When the bus depot on the site 17, will be available in 2040, the process will move to that location. The first intention for the green strategy is to deal with polluted ground and fertilized the soil by growing a forest. Eutrophic elm-ash forests is in place on the shore of the Malaren lake.

The Fraxinus excelsior European Ash, the Ulmus glabra wych elm, and also Pedunculate English Oak, are in numbers. Those species will be planted to grow the forest. Especially, the European Ash and the pedunculate Oak are tolerant to the climate change, resisting to heat of raising temperature's cities. The strategy of planting will be taking care by experts, biosphere specialists, landscape designers and gardeners, first plantation will be the pioneer trees.

They will have the responsibility to monitoring the place. This is the same strategy that is used for the water pavilions and growth of aquatic plants. Pioneer trees are the fast ones to settle on big destroyed landscapes. Those will be the first trees to grow. Those trees will prepare the soil for the next stage of growth. We need that intervention to grow the pioneers trees.



Schematic action plan for the water improvement



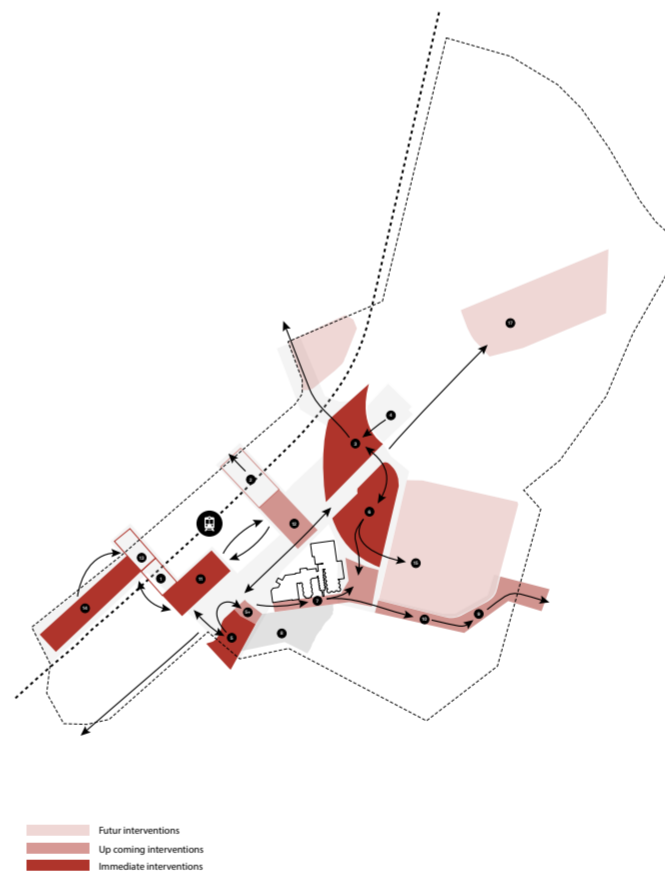
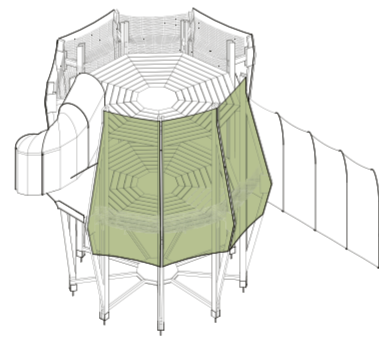
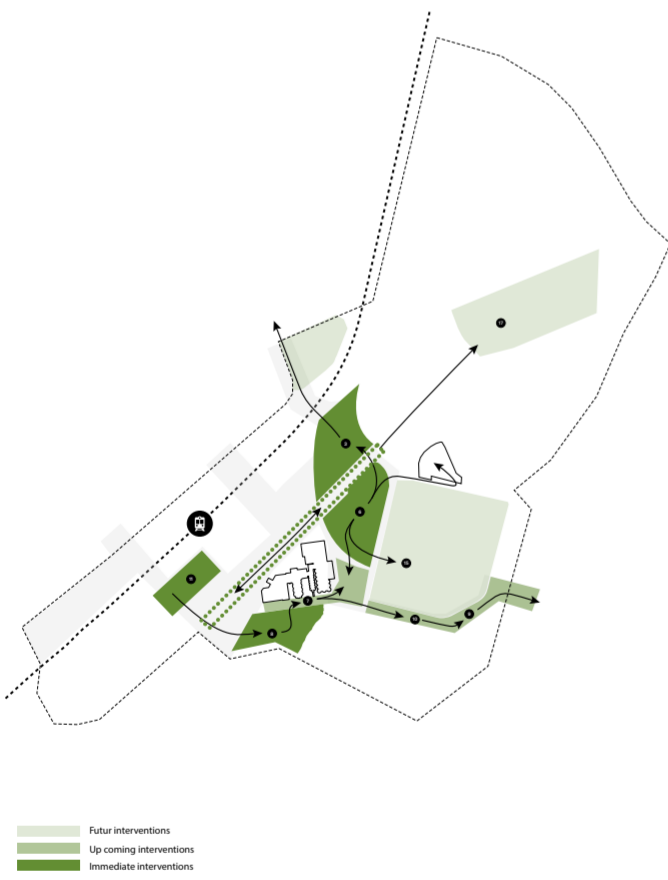
Social pavilion during the first workshop in 2024

SOCIAL STRATEGY

The social pavilions purpose is to create social cohesion. The social events will start in front of Västerås Station, on the site 14 and site 11.

As the social pavilions link Västerås Station to the destruction site, site 6, we will activate the Kungsängsgatan street, throughout exhibitions, events, interventions as sitting and meeting places and pavilions to create a link between the two locations. Inclusion: Dynamics of inclusion and exclusion can become processes of home-making and of community-building by facing uncomfortable socio-cultural issues. It is easier to address these issues in a communal space which allows personal freedom of expression. We hope our pavilions will be such spaces.

To arrive at the point in which all individuals feel free as at home in a space certain thresholds need to be surpassed and worked (see diagram). At the start it will be the attractiveness and cosiness of the pavilions that will captivate citizens. They will have to be maintained, as to ensure their continual use. After using the space for a certain amount of time visitors will feel co-owners of the spaces and thus feeling free in them. This freedom allows for co-creation in space by discussing together on their use. This will lead to joint decisions which will constantly be re-evaluated in social interactions and the previously mentioned democratic processes. When individuals or groups feel excluded this process tends to go in reverse – see diagram. It is easy to expect the excluded to do all the work of home-making and fitting in through continual effort. However, home-making is a connective bridge between individuals in boundaries of respect and curiosity in understanding. Communication is key both to reach out and include, as well as to ask to be included in all ways an individual feels comfortable.



Relevant sites for the social strategy

Relevant sites for the recycling strategy



Water pavilion Almost finished 2034 Original image courtesy of Lars Hedberg

