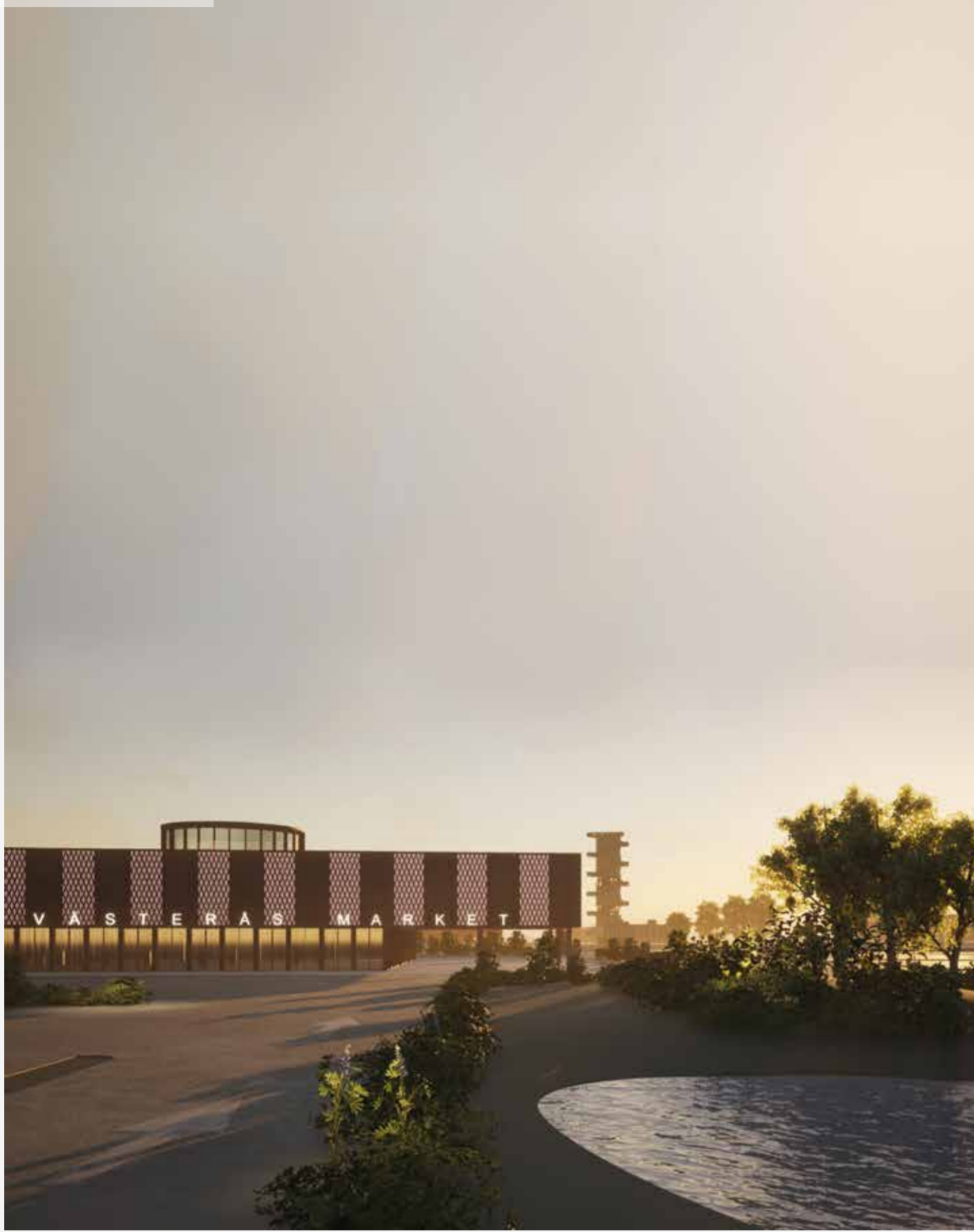


SILOPARKEN

AX923 TRANSFORMATION THROUGH RECOGNITION



1. EXISTING SITUATION



2. FUNCTIONS

- INDUSTRIES
- OFFICES
- COMMERCIAL
- SPORT
- EDUCATION



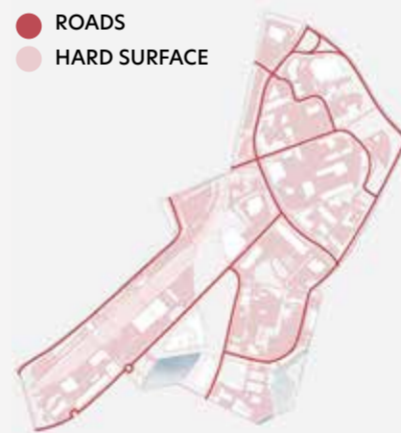
3. BARRIERS

- 1 RAILWAY
- 2 KUNGSÅNGSGATAN
- 3 FENCED AREAS



4. TRAFFIC AND HARD SURFACE

- ROADS
- HARD SURFACE



5. PEDESTRIAN ROUTES

- PEDESTRIAN ROUTES



6. STORM WATER

- EXISTING STORM WATER MAP



1. EXISTING STORM WATER ANALYSIS

2. IDENTIFYING NEW PATHS BASED ON ANALYSIS

3. ADDING NEW FUNCTIONS

Diagrams and mapping

We started by producing diagrams to aid us understand the existing situation of the site. All the industries, businesses and functions located nearby where mapped out. The land that was accessible and the land that was not, the most trafficked roads as well as the hard and more porous surfaces. We found the way the excess water ran off the site just as interesting as the routes the pedestrians chose to walk.



VISION

The proposal relates to the site's needs and to the theme of "Living Cities" by recognizing and encouraging what is already there and helping it grow. The site is perceived as deserted and impersonal, simultaneously as activities and life is happening all around. The proposal derives from the idea to highlight the existing in order to understand the history of the place and incrementally lead the site through its transformation.

METHOD - Recognize and refine

The work process set out to identify and analyse the limitations of the site, such as the lack of greenery and biodiversity or the contaminated soil. The proposal has found various ways of refining them in various ways. The silo, for example, is referred to as a hurdle whilst we understand it as an asset. Not only will it serve as a surface for a proposed installation, it has also inspired choices of material, shapes and colours.

STRATEGY - Nature first, architecture second

By recognizing the power of nature as well as the prerequisites of the industrial landscape the new natural is created. The structures come in three scales and in various shapes, all inspired by the industrial buildings and their playful colours. Contrasting their materiality and accessibility. The proposed structures are light and apparent whilst the surrounding built environment is firm and sealed.

IMPLEMENTATION

The proposed strategy of transforming the nature first and adding the architecture second is turned into action by implementing 3 simple steps of landscaping, first blue, then green and then transitional. Meanwhile the landscape is being refined and reshaped 3 different scales of temporary structures are built and placed on top. Some can be implemented directly as well as others are incremental, scaled up, gradually. In short, the proposal brings forth a strategy for landscape transformation in combination with a library of temporary structures. Though the structures are relatively abstract, they will be paired with suggested functions, uses and locations. The main goal however is to recognize and refine what is already there.

- MÅLARPORTEN TIMELINE**
- 1 Site available until 2027
 - 2 Site for new permanent structures available after 2025
 - 3 Site for temporary transportation hub between 2023 and 2025
 - 4 Site available after 2026
 - 5 Site available
- AX923**
- BLUE INFRASTRUCTURES**
- 1 Water mirror
 - 2 Rain garden
 - 3 Infiltration strip
- GREEN INFRASTRUCTURES**
- 1 Park
 - 2 Open air gym
 - 3 Playground
 - 4 Public square
 - 5 Dog park
 - 6 Pedestrian crossing
 - 7 Shared space
 - 8 Bikelane
 - 9 Pocket park
 - 10 Quai
- TRANSITIONAL LANDSCAPES**
- 1 Sunflower field
 - 2 Salicaceae plants
- TEMPORARY STRUCTURES**
- 1 Local market
 - 2 Observation tower
 - 3 Pavillion
 - 4 Kiosk
 - 5 Bakery
 - 6 Bar
 - 7 Bridge
 - 8 Light portal
 - 9 Bus shelter
 - 10 Floating sauna
 - 11 Floating pontoon
 - 12 Scene/terrace
- TEMPORARY INSTALLATION**
- 1 Projection surface



1:4000 N 0

THREE STEPS OF LANDSCAPING

BLUE INFRASTRUCTURES

The data from an existing storm water map combined with local knowledge steered the shape of the proposed water ways, creeks and ponds. They are exaggerations and excavations of where the surface water runs off today. By recognizing the existing behavior of the water on site, the proposal controls the pace of the water and refines it by incorporating natural solutions that improve the water quality before its outflow in the harbour. In contrast to the water getting cleaned in the existing enclosed Reningsverk this water will be a visible feature in the landscape. While contributing to irrigation and improving the local microclimate in the sun-exposed Siloparken, the waterways will create a series of new, blue-green public spaces. Not only will they solve the climate change increase of rainfall, but simultaneously be a cultural and social benefit for the community and perhaps an attractive solution

GREEN INFRASTRUCTURES

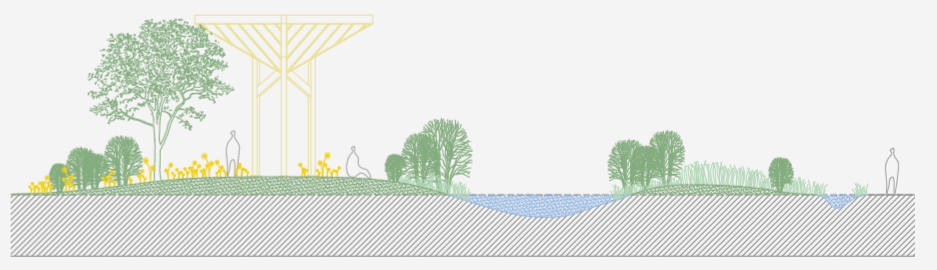
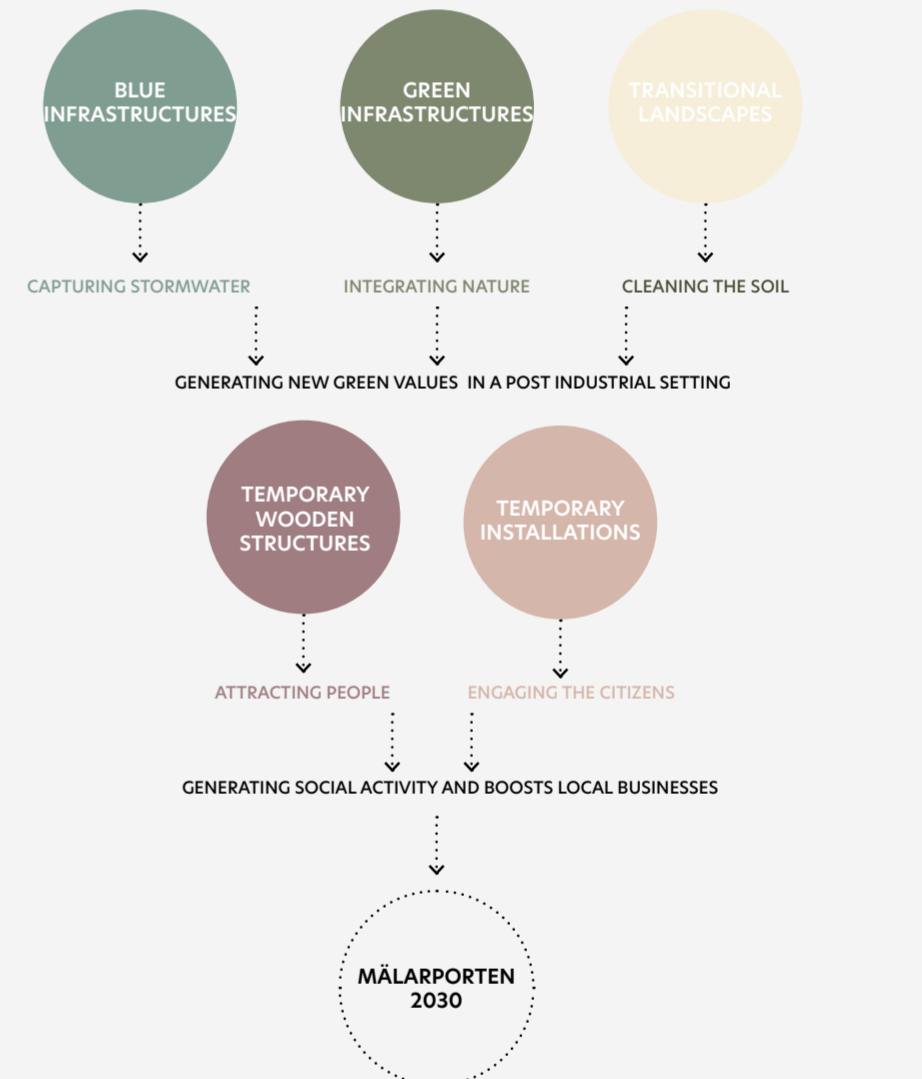
When the water ways are recognized and their paths, creeks and ponds are excavated the abundant soil is pushed aside and sculpted into a terrain of mounds, rolling hills and valleys. The exact height or shape of the mounds are flexible, the soil can be added to or shifted around in creative ways. Potential pipes or infrastructure under ground may determine the placement of the mounds or the need for valleys and plane surfaces. The landscape will attract kids and their toboggans in the winter and lovers on a picnic seeking shade from the wind-exposed harbour on the first warm day of spring. The mounds have grown green and their soft shapes remind us of the natural landscape that dominated the harbour pre industrial times. The 28000 square meter large landscape exclaims that this place is post-industrial now! It tells us its transforming, forcing us to explore, question and envision - for it Wwill not be long 'till it is bulldozed flat again that the rest of the world will be coming to Siloparken to experience.

TRANSITIONAL LANDSCAPES

When the summer comes to an end and the feeling of temporality is at its peak, an overwhelming amount of sunflowers will bloom. The sunflowers are proposed for their capacity of phytoremediation, to reduce the concentrations of contaminants in the soil. The flowers are a cost-effective environmental restoration technology. They should be planted in May and from then they, day by day, just by growing, will refine the soil from pollutants from before. In 25 years the soil will be decent and for 25 seasons the flowers will have attracted people to come see them grow, to pick them up and to bring them home. They might discuss or ask around - why a field of sunflowers on this ground? Perhaps it will with time be clear that it is all a result of what is already there.



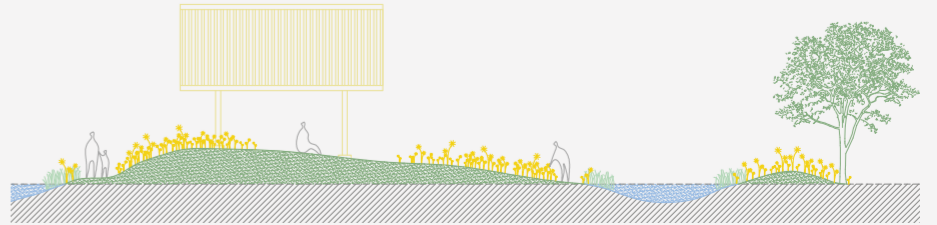
1:1000 N 0



CONCEPTUAL SECTION OF TRANSITIONAL LANDSCAPE

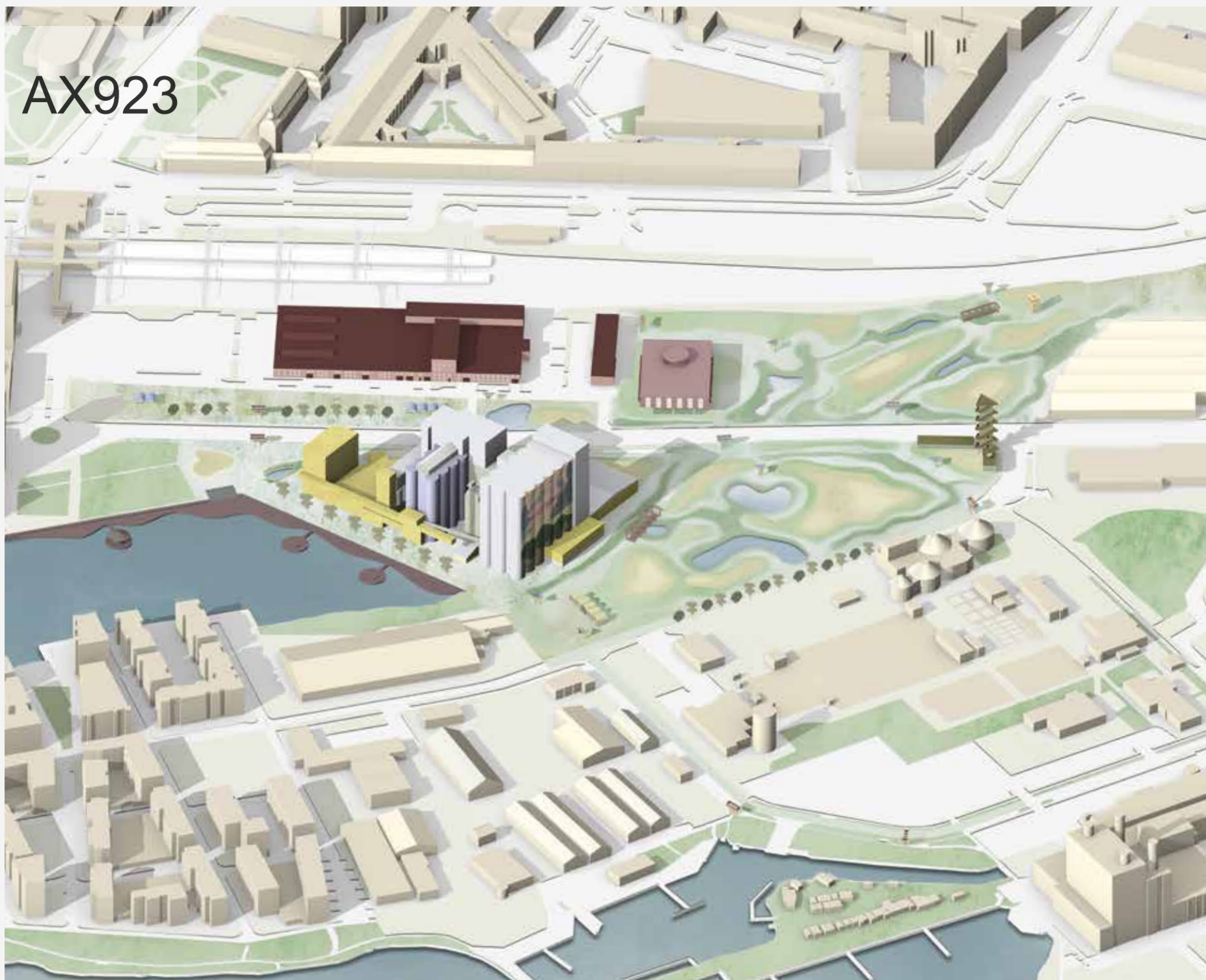


CONCEPTUAL SECTION OF KUNGSÄNGSGATAN



CONCEPTUAL SECTION OF TEMPORARY STRUCTURE

AX923



THREE SCALES OF TEMPORARY STRUCTURES

SMALL

1. PLATFORM

The 10 meter wide round platform is slightly raised above the ground, just enough for you to sit on, step up on, or even dance on. The simple design doesn't tell you what to do, only encourages you to do it. It enables participation and dialogue. The platform is connected to a speaker and lit at night, creating an inviting atmosphere for dancers and by passers. The platform is a shout out to Dansverkstan, an existing function that has enormous potential to contribute to a living city with an extra focus on young girls!

2. LIGHT PORTAL

Portals are symbols for new beginnings and transitions. These portals are the smallest of the temporary structures and can be moved around frequently, functioning as public reference points wherever they are needed. At night they serve as overdimensioned urban lanterns, illuminating the landscape, guiding visitors through Siloparken.

3. ONE PAVILLION

The curved facade of the silo is recognized and replicated, giving shape to the roof of the pavilion. One curve, one roof, one pavilion. One pavilion is the perfect size of a bus stop and since public transport in Västerås consists mainly out of buses, our proposal is to make a stop for them at Siloparken. A small change of the bus line is easy and inexpensive yet is a prerequisite for visitors of all ages to sustainably access and experience the transforming Mälarporten

4. BRIDGE

The temporary bridge is a modular structure that can be flat-packed for easy transportation and storage. The bridge can provide site access for pedestrians and bikes during construction, bridging utility pipes, small culverts, passages of water or sections of uneven terrain. It lights up at night creating safe connections, reminding us of the great symbolism - transition and connection between places and/or people.

MEDIUM

4. TWO, THREE, FOUR OR MORE PAVILLIONS

Multiply the pavilion structure, enclose a wall or two and enough space is created for a local business to transform. Lantmännen have been on site for nearly 100 years and though they have 36 bakeries in 21 countries this will be the first time a passer-by can taste the fresh product of the grains from inside the silo. Though the structure is replicable and movable the proposed placement of the bakery pavilion is near the water, on the route of the morning joggers. In the evening when the bread is sold the pop up bar can open, offering sun set views and beer from Hantverksbryggeriet, the local microbrewery.

5. COLD BATH/SAUNA

The cold baths in Västerås harbour seem to have a history of temporality. No one has stayed around for more than 30 something years. The first one was replaced, the second one burnt down and the third one is our proposal. Saunas are known for their transformative effect, for purifying, improving circulation and performing miracles! The Sauna floats and can be moved around, however we propose it starts where the last one ended, accessed by a long pier by the outfall of Svartån.

6. FLOATING PONTOON

Floating pontoons are suggested for the water front by the silo. The placement is important to strengthen the recreational path from east to west, from the newly developed park to the popular adventure bath.

LARGE

7. LOOKOUT TOWER

The tower rises high up above the ground and invites you to climb and look out. The overview treats you with new perspectives and gives you access to the industrial areas that from the ground are fenced off and invisible. The tower will serve as an event of education as your understanding of the context will enhance. School classes from Realgymnasiet and Kunskapsskolan will probably be the first to visit points at things and wonder. The tower enables a special type of socio spatial dialectic.

8. LOCAL MARKET

The largest temporary structure is designed to be multi-functional, to enable public events such as markets or concerts. The space can bring together local and regional businesses, for example "smaka på västmanland" and offer them a commercial venue that is missing on site today. The proposed location is strategic in relation to the travel center that, according to space scape (2020) has 33 000 visitors daily. The market has potential to unify and create a lively in- and outdoor living room for both commuters and cindergarden excursions.

9. PROJECTION

The overpowering surface of the silo is used as a canvas to project alternative uses of the space inside. Artists as well as children are invited to create projections of their visions. The projections will light up the harbour, making it impossible to not recognize the existing structure and the transformation that awaits. The projection transforms the function of the silo into a lighthouse, guiding the visitors through the metamorphoses of Mälarporten.

