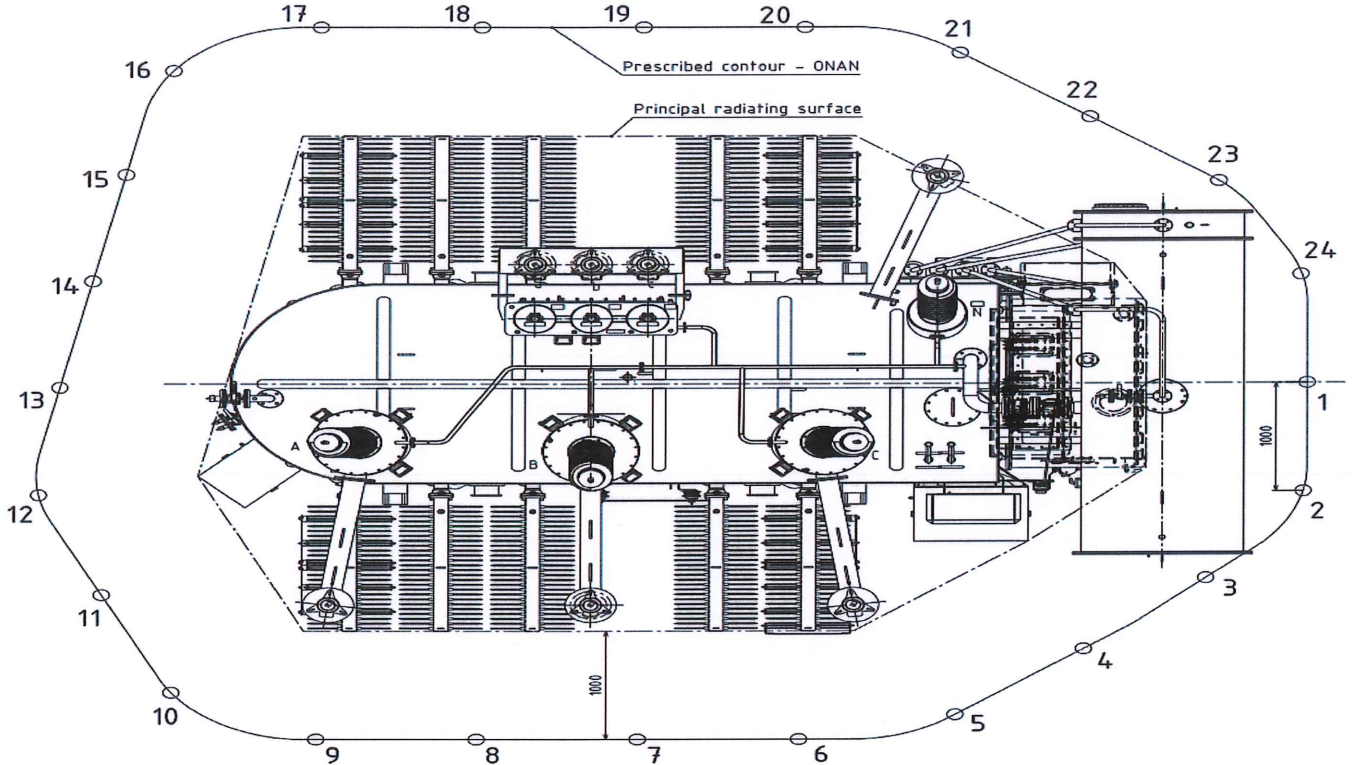


1.0

RATING VALUES

Transformer type :	TRN 40000-145/CL	Connections :	YNd5
Rated power (kVA)	40000 / 40000	Type of cooling :	ONAN
Rated voltage (kV)	140 / 11,5	Frequency (Hz) :	50
Serial No. :	ET1479 - 465092	Tested in acc. :	IEC 60076-10



Test conditions :		Guaranted dB(A)	Measured dB(A)
Type of cooling : ONAN, measured at 100% Ur	Sound pressure level - (LpA) - ONAN at 100% Ur	60,0	49,7
Distance of measurement contour : X = 1m	Sound power level - (LwA) - ONAN at 100% Ur	---	69,8
Lenght of prescribed contour : Lm= 24m			
Distance between measurement points : D = 1m		Instrument Type: Brüel & Kjaer 2260 Investigator	
Height of the transformer : h = 2,725m		Test result : P A S S E D	

Note: Measured with walk-around method



Tested by :

Approved by :

Date of measurement:

L. Brčić, dipl.ing.

Darko Bistrički, dipl.ing.

05.05.2023.